



**LANGVER**

**RATCHET TENSIONERS**  
PRODUCT RANGE

# ABOUT US

---

Established in the 1970s, Langver Engineering is a global company with its roots firmly in the North of England. Operating from a functional facility in Thirsk, North Yorkshire, we design and manufacture ratchet tensioners for curtainsider trucks and trailers. With a reputation second to none, we are industry renowned for delivering high quality parts and exceptional service, supplying to every major manufacturer in the UK as well as throughout Europe and beyond.

Our ethos is on ratchet tensioners which are bespoke, specifically designed and made to fit each client's requirements by our highly skilled engineers.

*We are ISO certified in design, development and manufacture of bespoke curtainsider ratchet tensioners. Our effective quality management system ensures our customers receive consistent, good quality products and services.*



# OUR PRODUCTS

---

Our ratchet tensioners are precision engineered and robot welded using CNC machined and laser profiled components, that can be customised to adapt to specific requirements. Every product is individually made and designed in-house to meet each client's exacting standards. We pride ourselves on longevity, using the highest quality materials, to ensure every tensioner is hard wearing and long lasting. It is these processes and values which set us apart from our competitors.



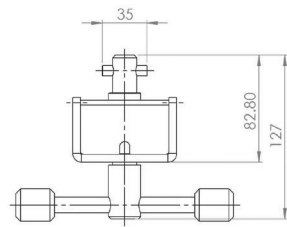
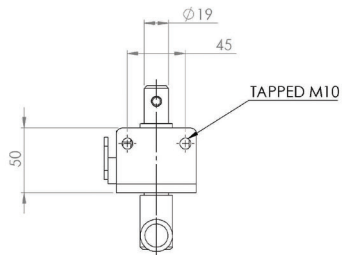
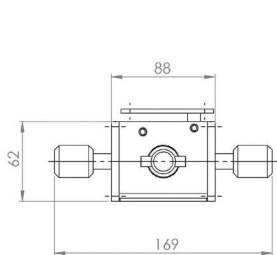
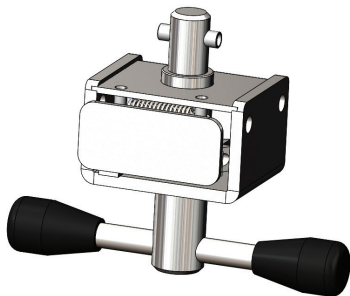
<b>Ratchet</b>	<b>Page</b>	<b>Ratchet</b>	<b>Page</b>	<b>Ratchet</b>	<b>Page</b>
<b>R10</b>	5	<b>R45M</b>	21	<b>R70</b>	37
<b>R11</b>	6	<b>R45TW</b>	22	<b>R75</b>	38
<b>R16</b>	7	<b>R47</b>	23	<b>R76</b>	39
<b>R17</b>	8	<b>R50</b>	24	<b>R77</b>	40
<b>R27</b>	9	<b>R52</b>	25	<b>R80</b>	41
<b>R29</b>	10	<b>R54</b>	26	<b>R85</b>	42
<b>R30</b>	11	<b>R55</b>	27	<b>R95</b>	43
<b>R33S</b>	12	<b>R55CTB</b>	28	<b>R100</b>	44
<b>R34</b>	13	<b>R55DB</b>	29	<b>WG2</b>	45
<b>R40</b>	14	<b>R55K</b>	30	<b>WG8</b>	46
<b>R44</b>	15	<b>R55SC</b>	31	<b>WG30</b>	47
<b>R45</b>	16	<b>R57</b>	32	<b>WG40</b>	48
<b>R45D</b>	17	<b>R60K</b>	33	<b>ACCESSORIES</b>	
<b>R45DN</b>	18	<b>R61i</b>	34	<b>JU10</b>	49
<b>R45K</b>	19	<b>R61iM</b>	35	<b>BOTTOM CAM</b>	50
<b>R45L</b>	20	<b>R63M</b>	36	<b>TOP TROLLEY</b>	51

All tensioners shown are left hand front / right hand rear



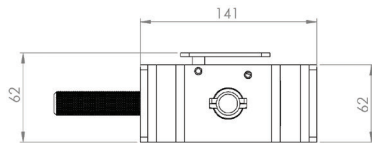
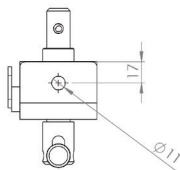
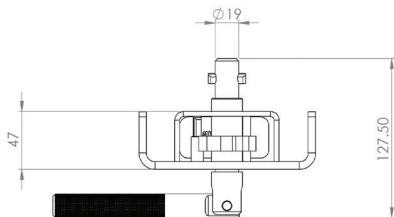
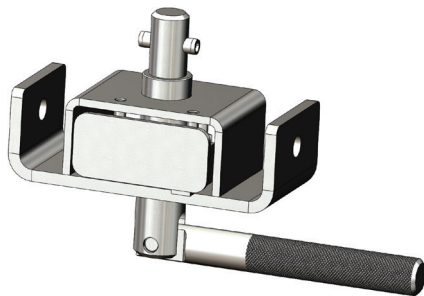
# R10

Originally designed for:  
Southfield Coachworks



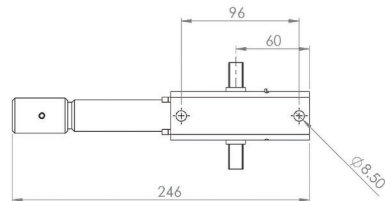
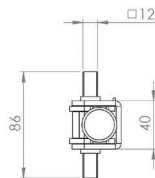
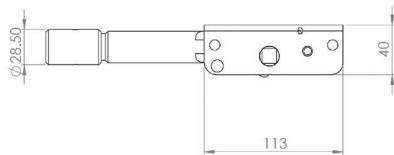
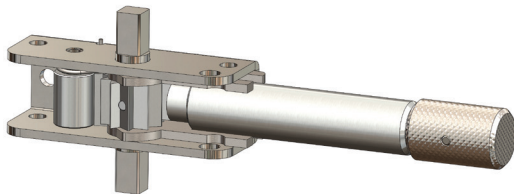
# R11

Originally designed for:  
Southfield Coachworks



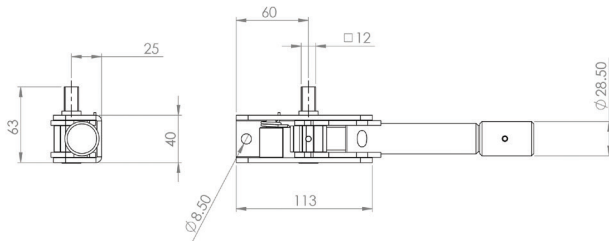
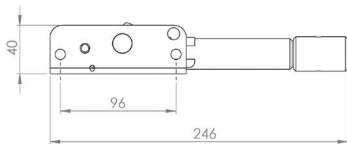
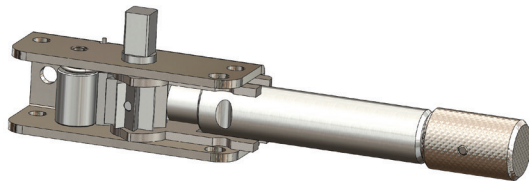
# R16

Originally designed for:  
TSE, Germany



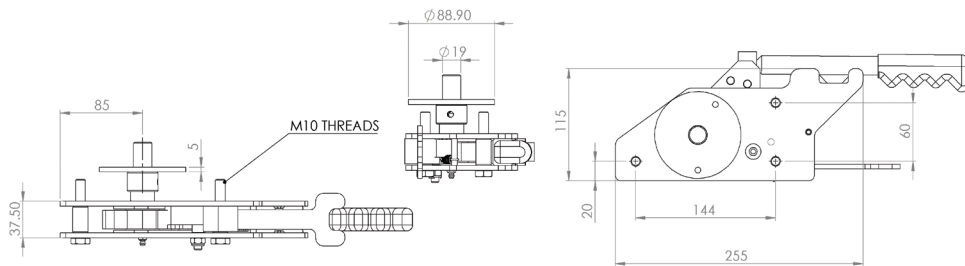
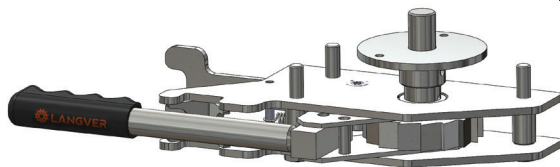
# R17

Popular European tensioner



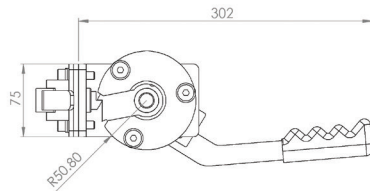
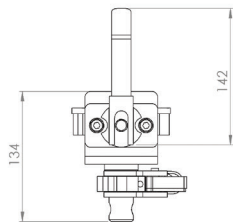
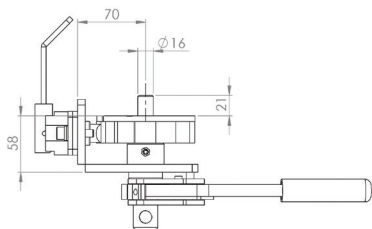
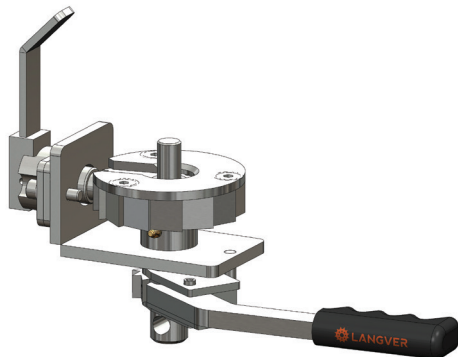
# R27

Originally designed for:  
SDC Trailers



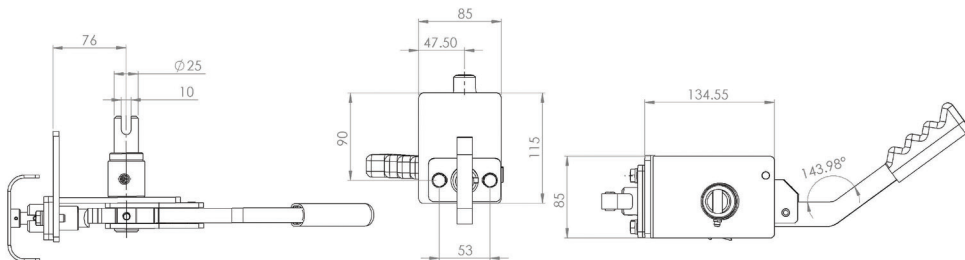
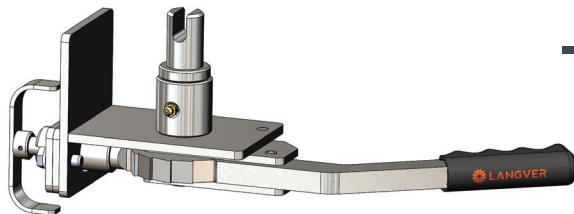
# R29

Originally designed for:  
Boalloy Industries



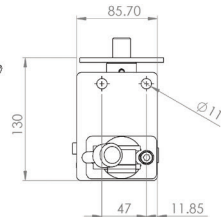
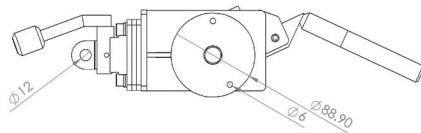
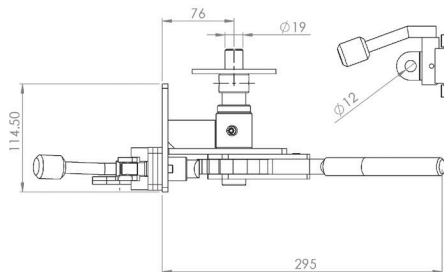
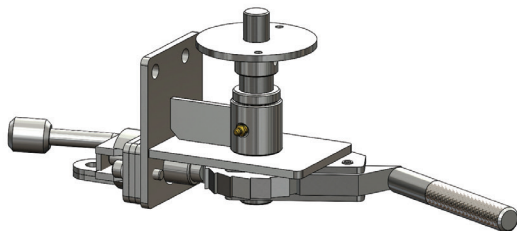
# R30

Popular universal tensioner



# R33S

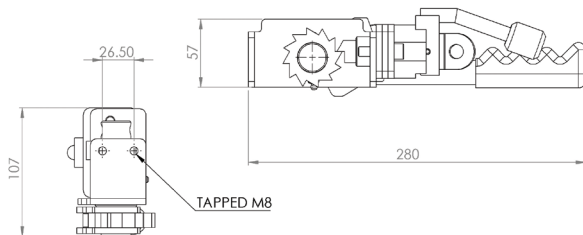
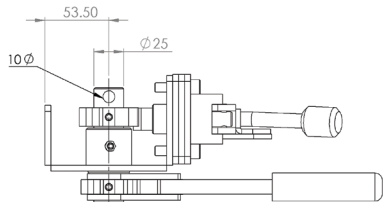
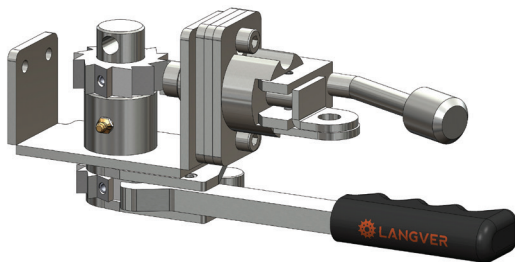
Originally designed for:  
SDC Trailers





# R34

Originally designed for:  
SDC Trailers



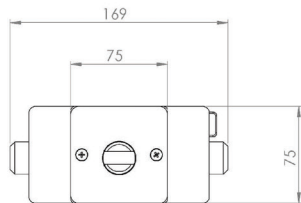
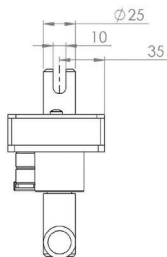
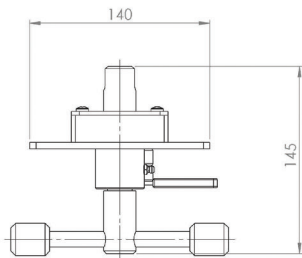
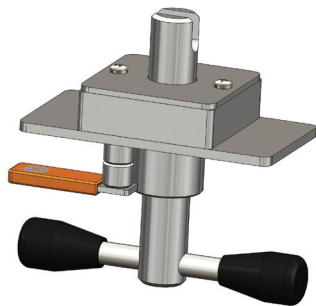
# R40

Popular universal tensioner

Alternative output spindles available:

**R40SQ** - 19.05mm square spindle

**R40W** - 18.25mm dia spindle -  
cross drilled with 8mm pin



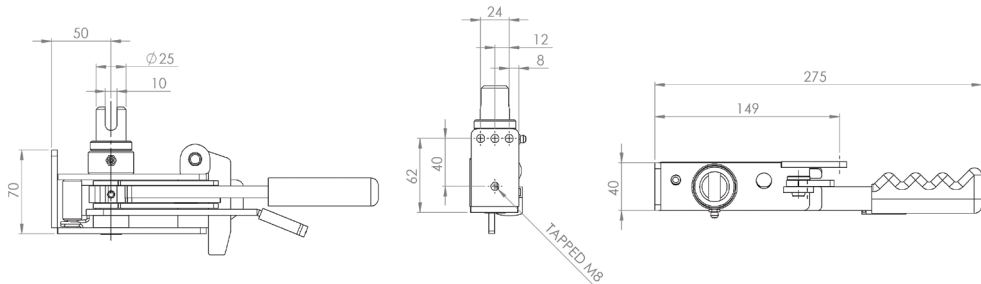
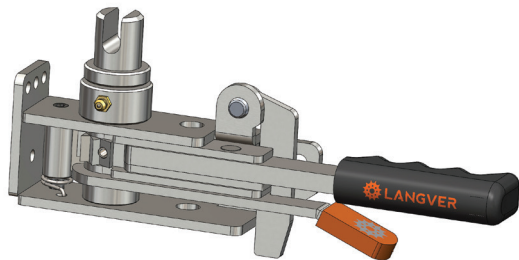
# R44

**Popular universal tensioner**

**Alternative output spindles available:**

**R44SQ** - 12mm square spindle

**R44W** - 18.25mm dia spindle -  
cross drilled with 8mm pin



# R45

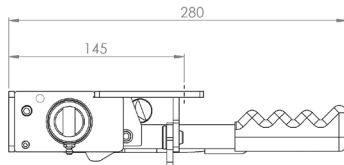
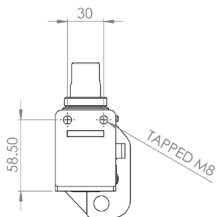
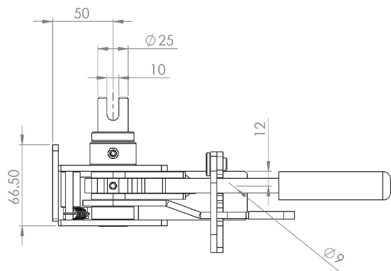
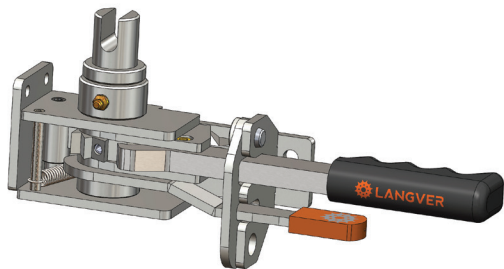
Popular universal tensioner

Alternative output spindles available:

**R45W** - 18.25mm dia spindle -  
cross drilled with 8mm pin

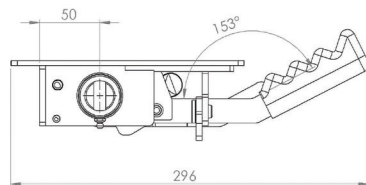
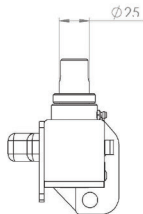
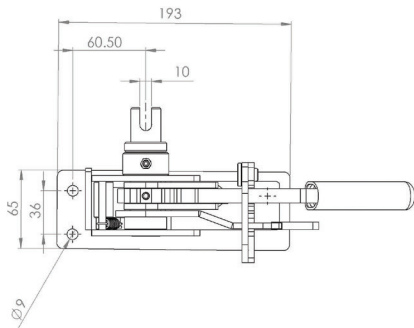
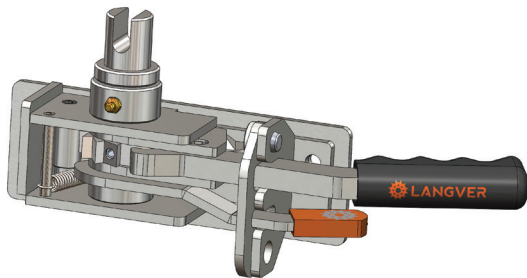
**R45R** - 28.57mm spindle with 8mm slot

**R45LD** - 31.75mm spindle with 11mm slot



# R45D

Originally designed for:  
Montracon Trailers



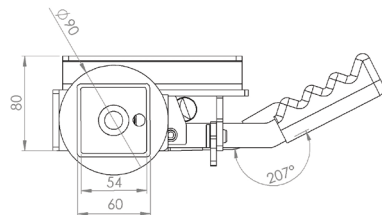
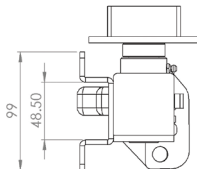
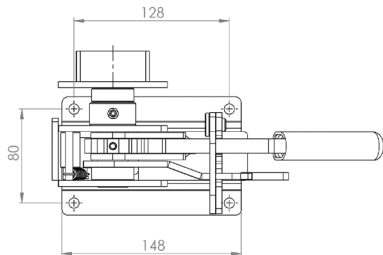
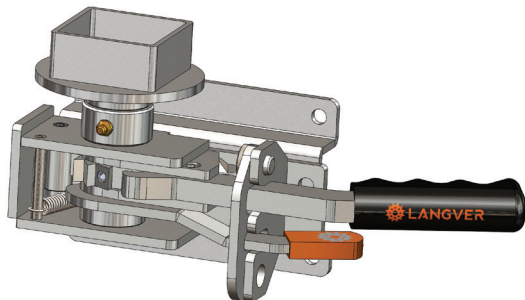
# R45DN

**Originally designed for:**

Dennison Trailers

**Alternative output spindles available:**

**R45DN SLOTTED** - 25mm spindle  
with 10mm slot



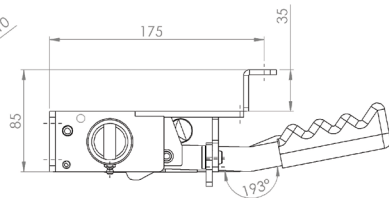
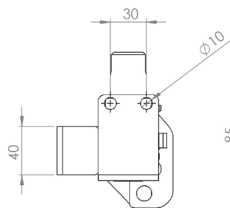
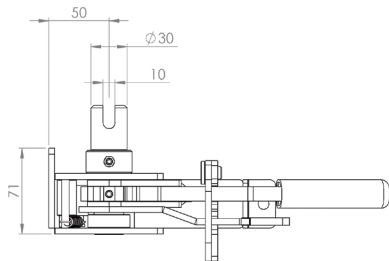
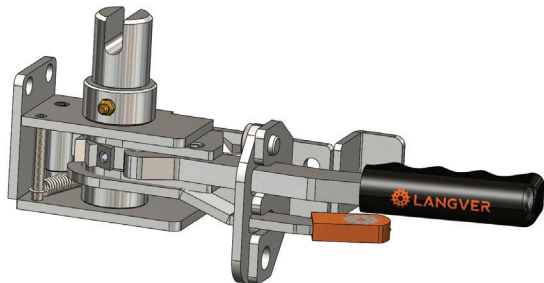
# R45K

**Originally designed for:**

S Cartwright & Sons

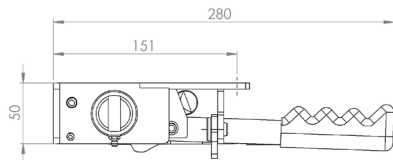
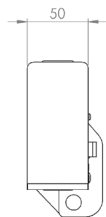
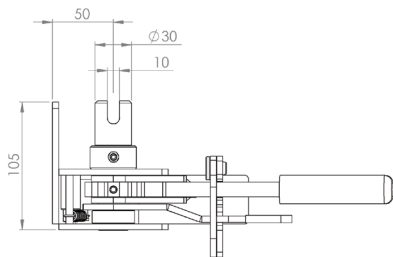
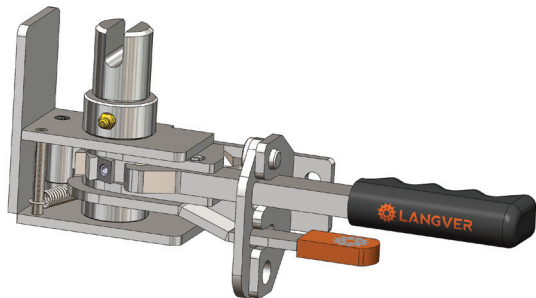
**Alternative tensioner available:**

**R45KT** – 35mm step reduced to 20mm



# R45L

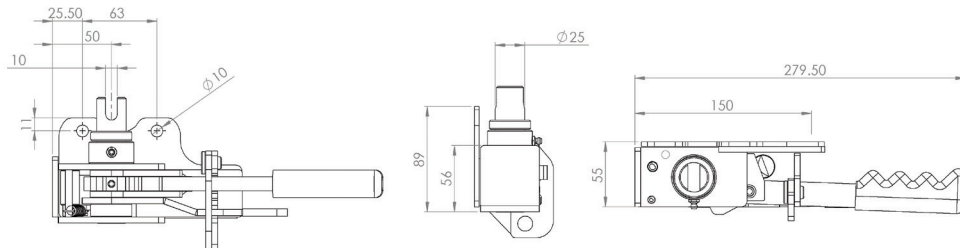
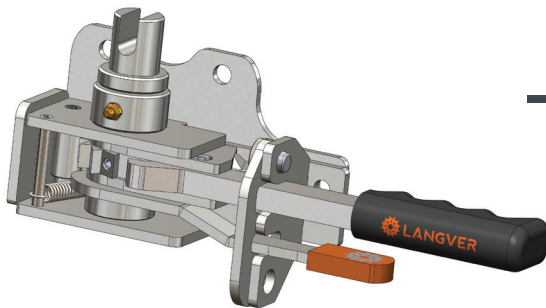
Originally designed for:  
S Cartwright & Sons





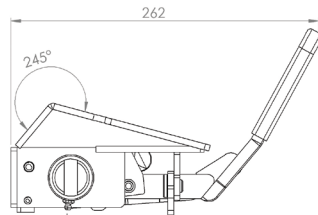
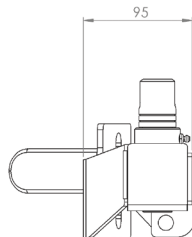
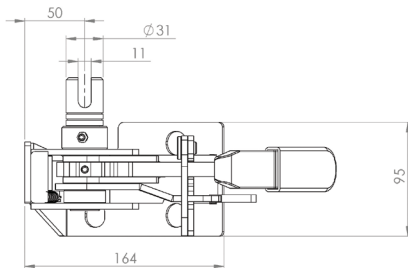
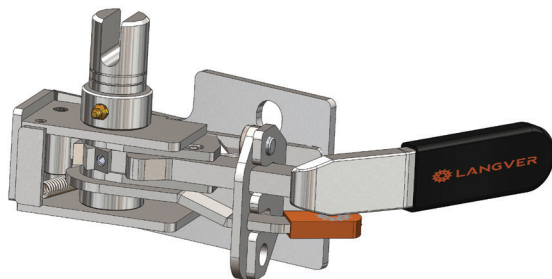
# R45M

Originally designed for:  
Montracon Trailers



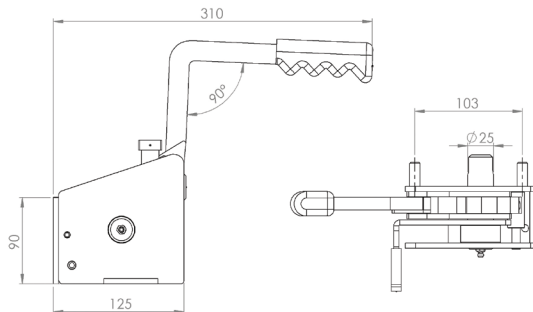
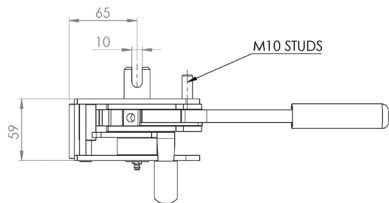
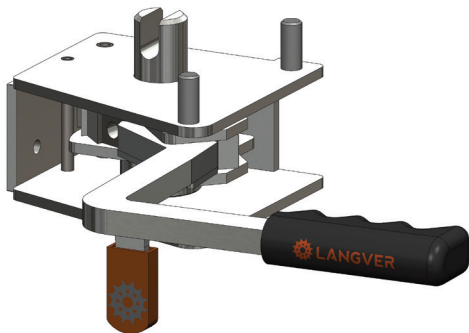
# R45TW

Originally designed for:  
Lawrence David



# R47

Originally designed for:  
Montracon Trailers

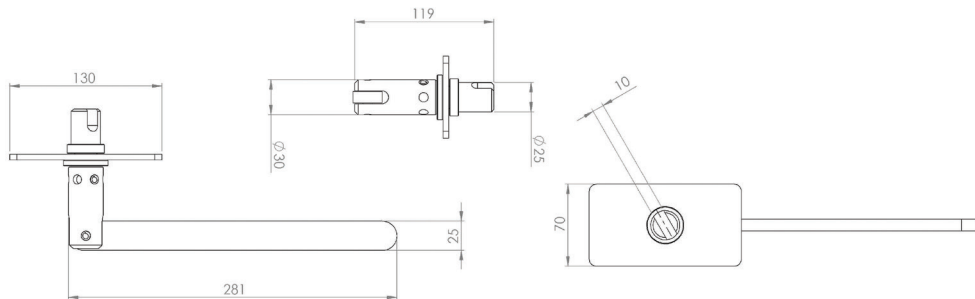
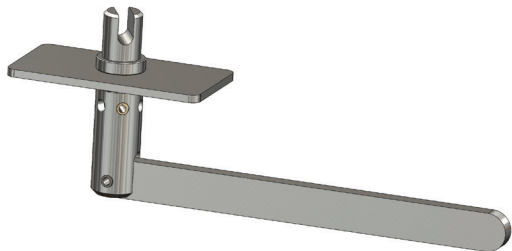


# R50

Popular universal tensioner

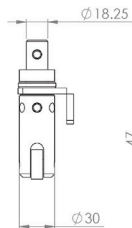
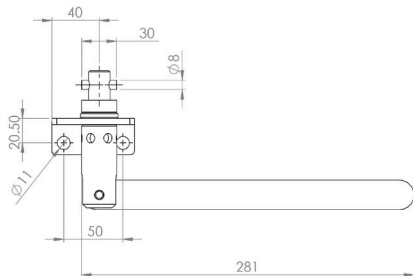
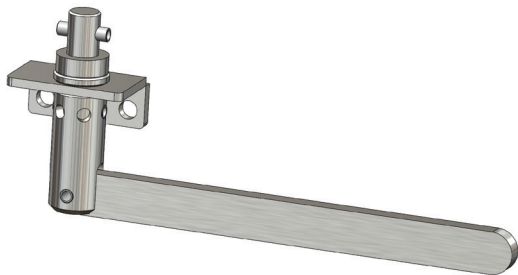
Alternative output spindles available:

**R50LD** - 31.75mm spindle  
with 11mm slot



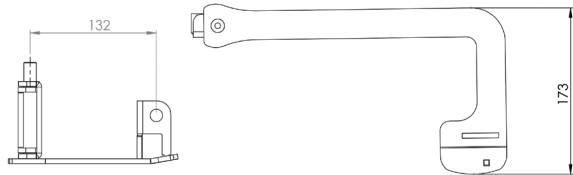
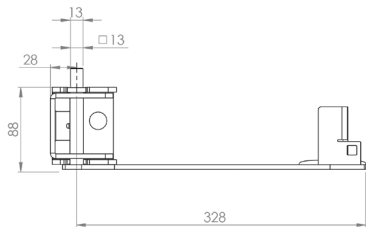
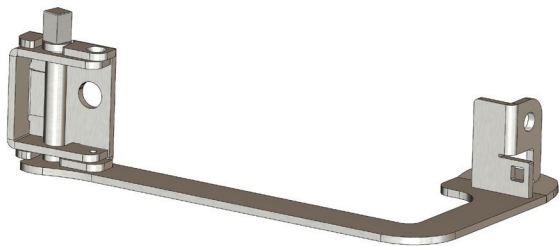
# R52

Originally designed for:  
SDC Trailers



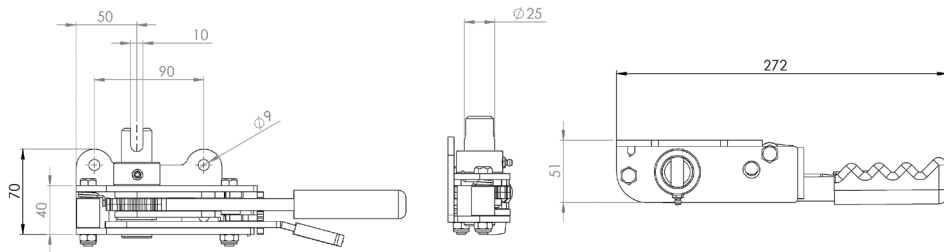
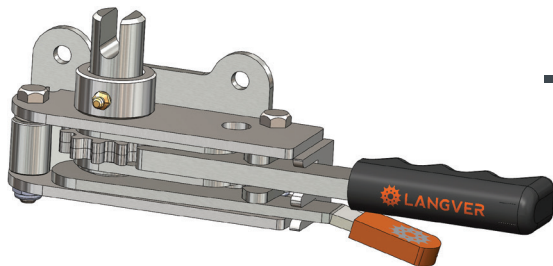
# R54

**Originally designed for:**  
German spares market



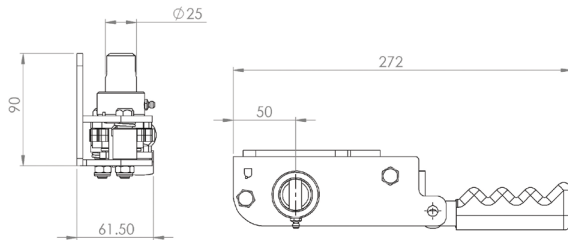
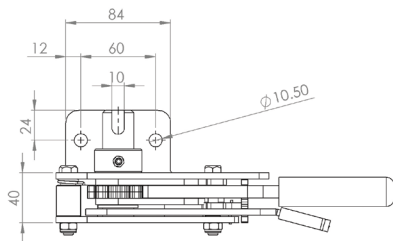
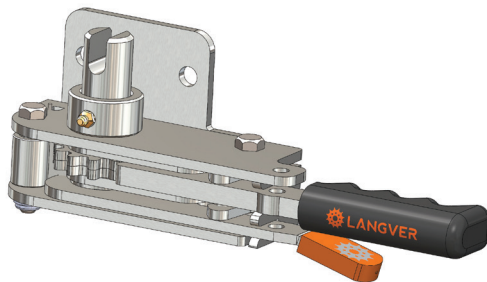
# R55

Popular universal tensioner



# R55CTB

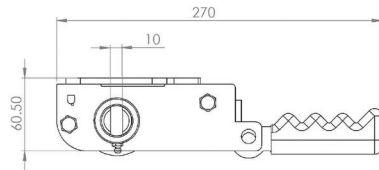
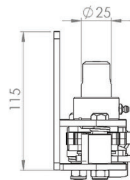
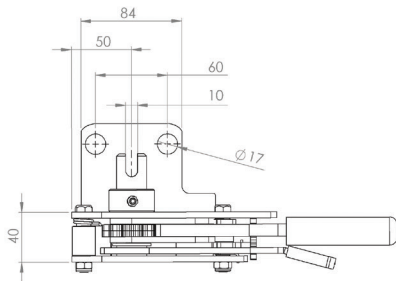
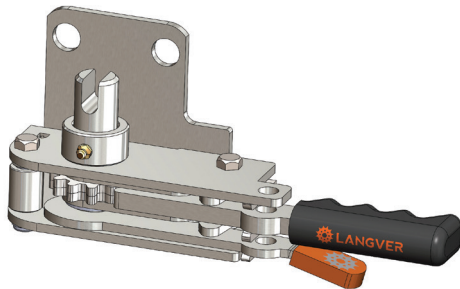
Originally designed for:  
Collier Truck Builders





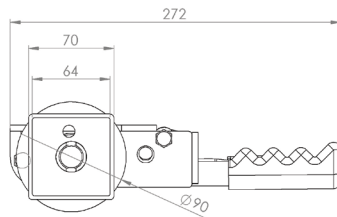
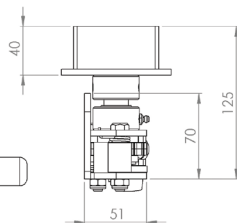
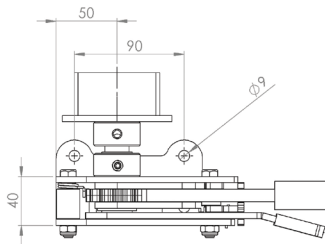
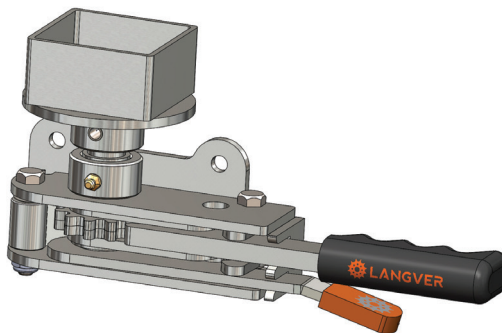
# R55DB

Originally designed for:  
Don-Bur Bodies & Trailers



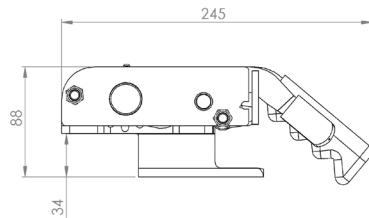
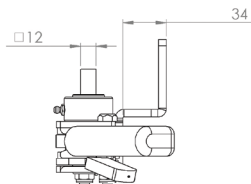
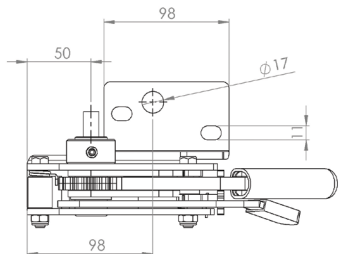
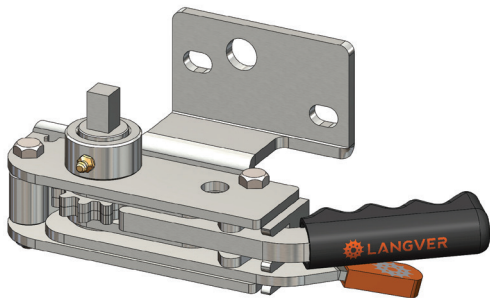
# R55K

Originally designed for:  
Don-Bur Bodies & Trailers



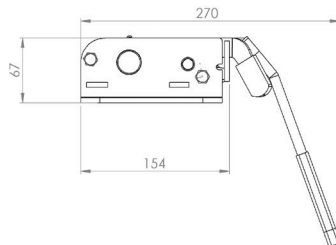
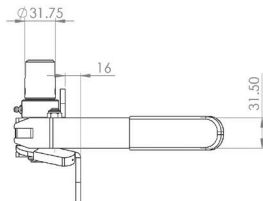
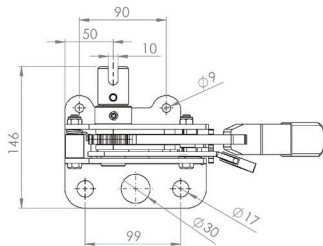
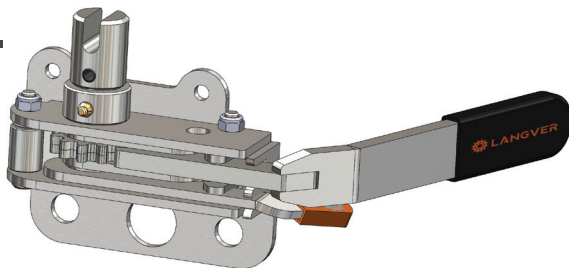
# R55SC

Originally designed for:  
Schmitz Cargobull

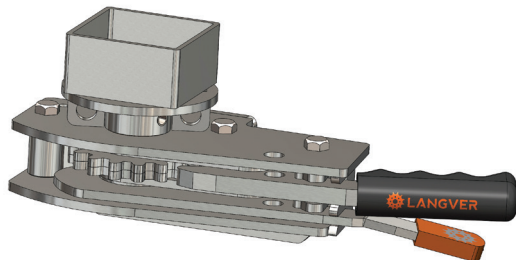


# R57

Originally designed for:  
Don-Bur Bodies & Trailers



# R60K

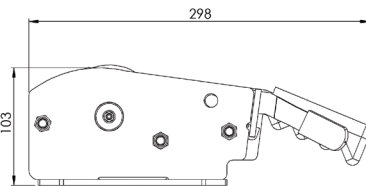
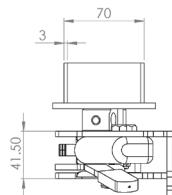
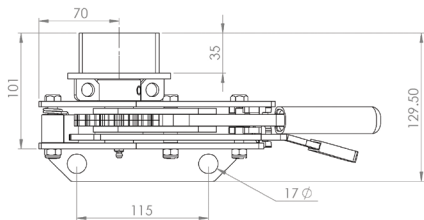


**Originally designed for:**

Don-Bur Bodies & Trailers

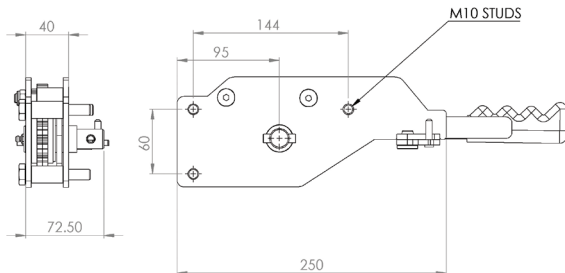
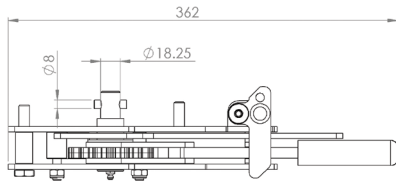
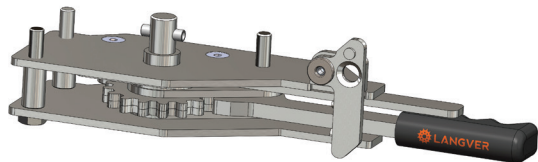
**Alternative output spindles available:**

**R60K SLOTTED SPINDLE** -  
25mm spindle with 10mm slot



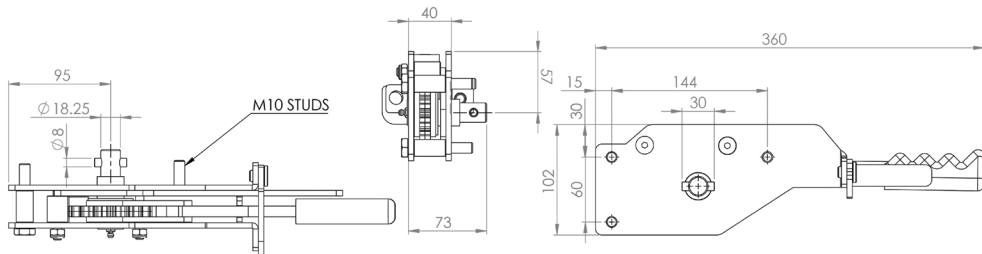
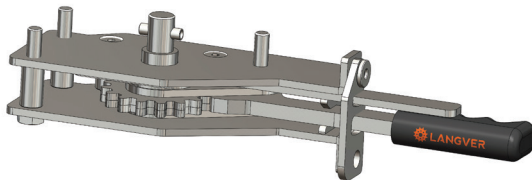
# R61i

Originally designed for:  
SDC Trailers



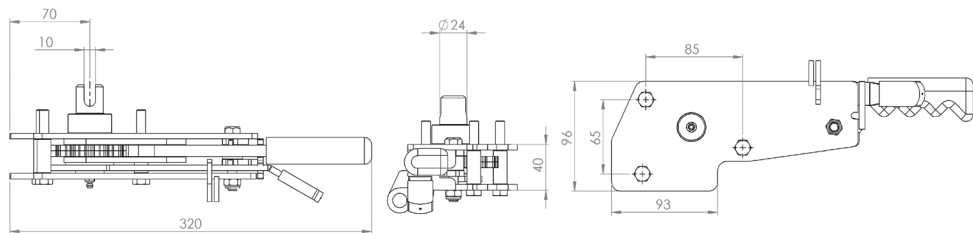
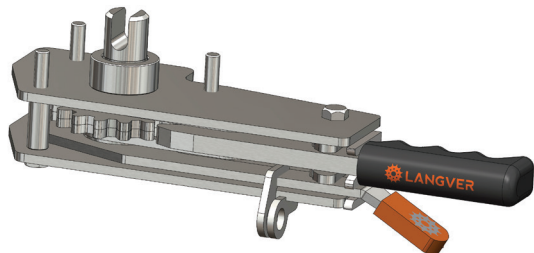
# R61iM

Originally designed for:  
SDC Trailers



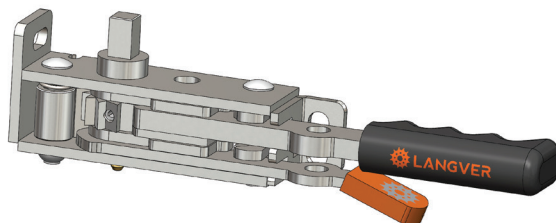
# R63M

Originally designed for:  
Montracon Trailers

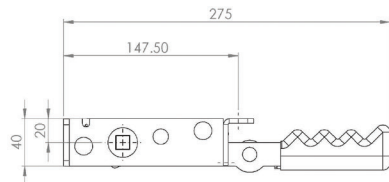
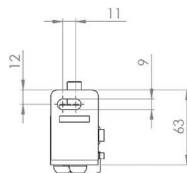
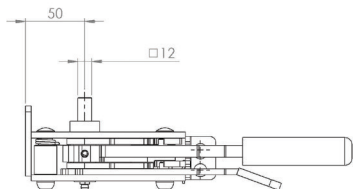




# R70

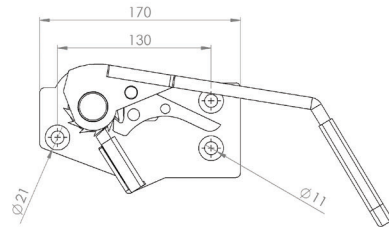
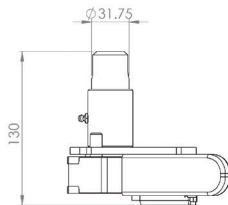
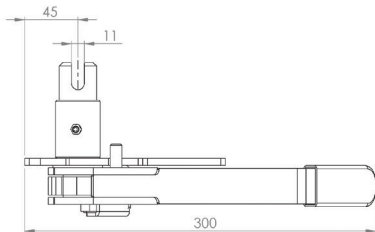
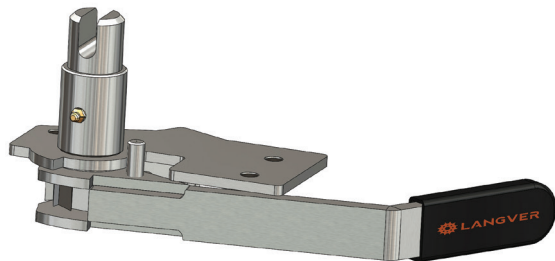


**Originally designed for:**  
Direct replacement for the Thiriet tensioner



# R75

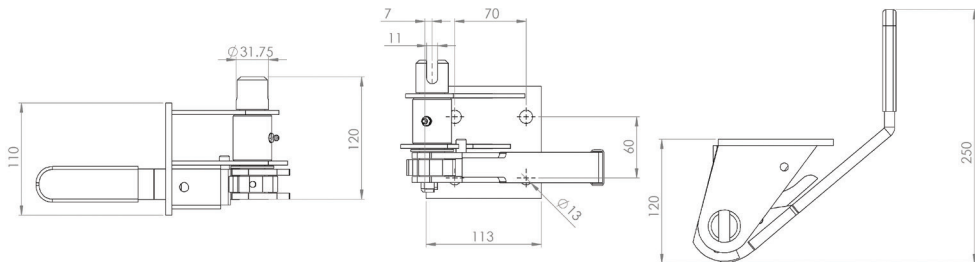
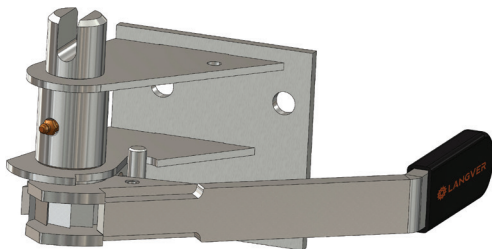
Originally designed for:  
Lawrence David



# R76

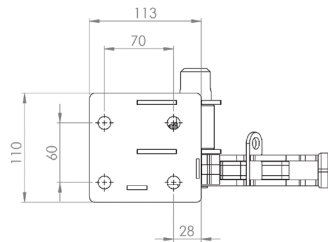
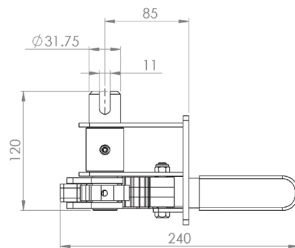
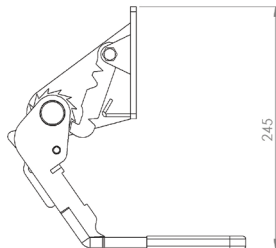
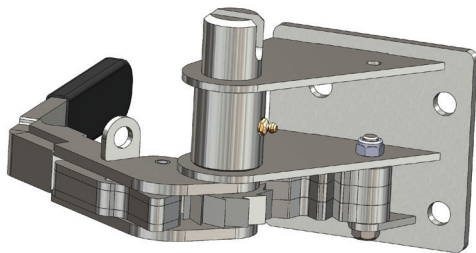
Originally designed for:

Lawrence David



# R77

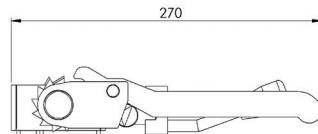
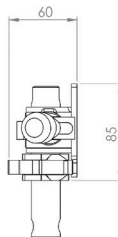
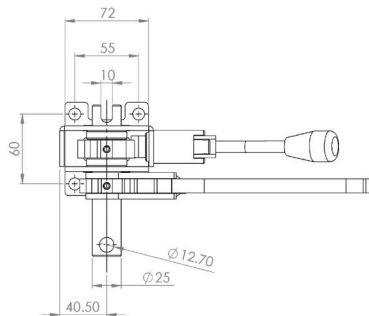
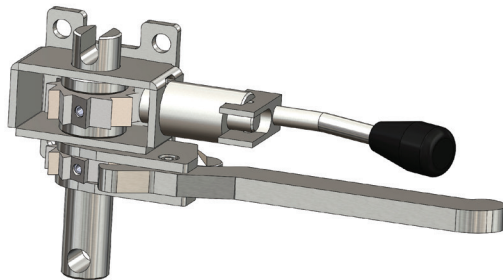
Originally designed for:  
Lawrence David



# R80

Originally designed for:

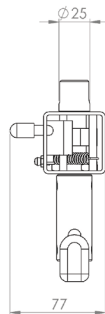
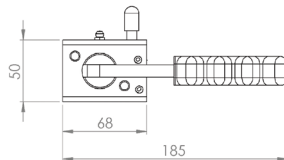
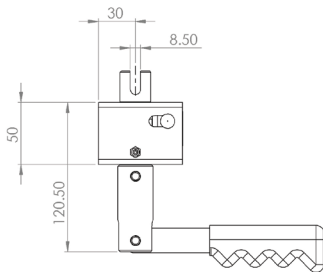
Boalloy



# R85

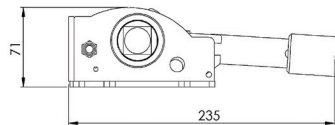
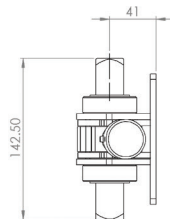
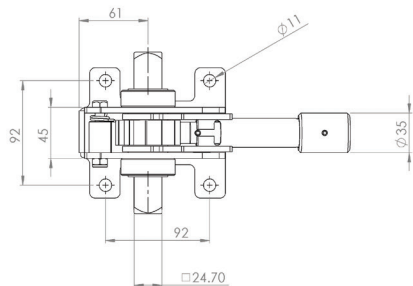
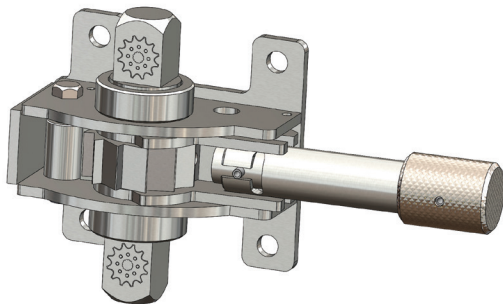
Originally designed for:

Panema Trailers



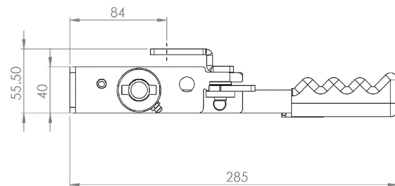
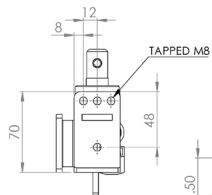
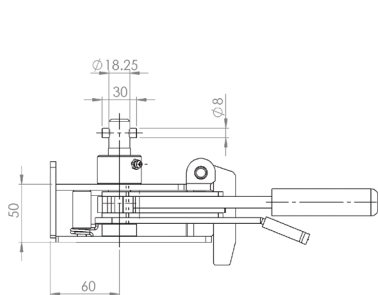
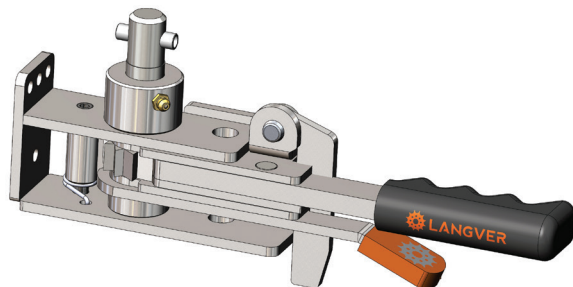
# R95

Popular in USA & Canada



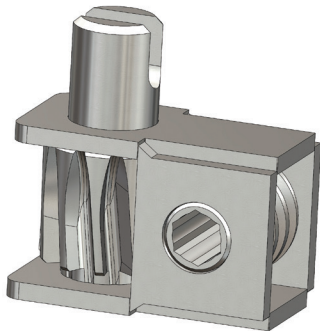
# R100

Originally designed for:  
SDC Trailers





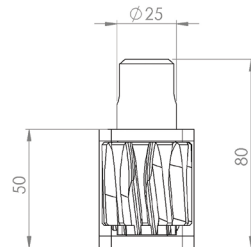
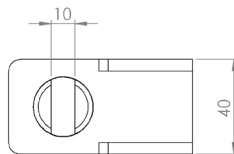
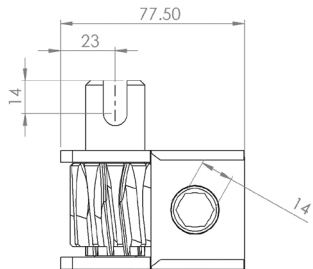
# WG2



Popular European worm gear

Alternative output spindles available:

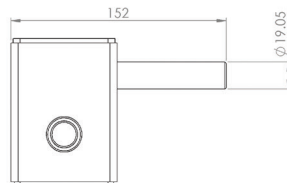
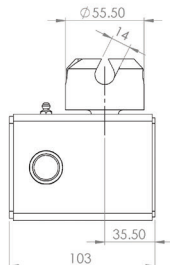
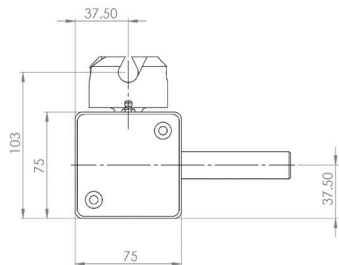
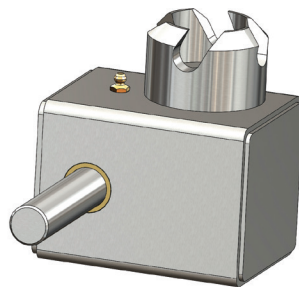
**WG2SQ** - 12mm square spindle



# WG8

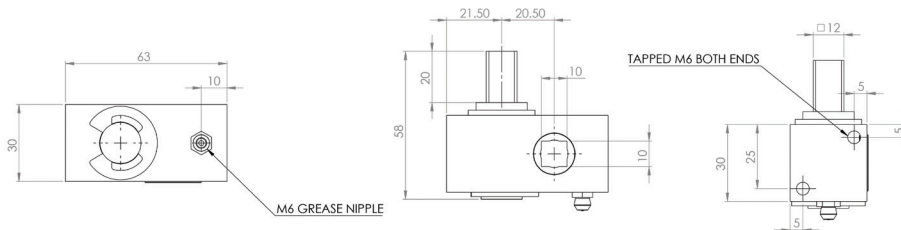
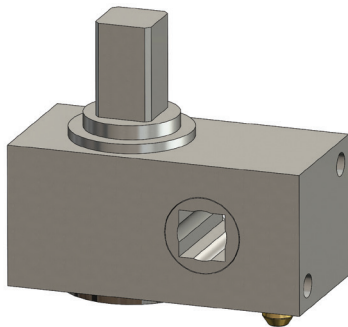
Popular in USA & Canada

Alternative output spindles available:  
**SLOTTED** - 25mm spindle with 10mm slot



# WG30

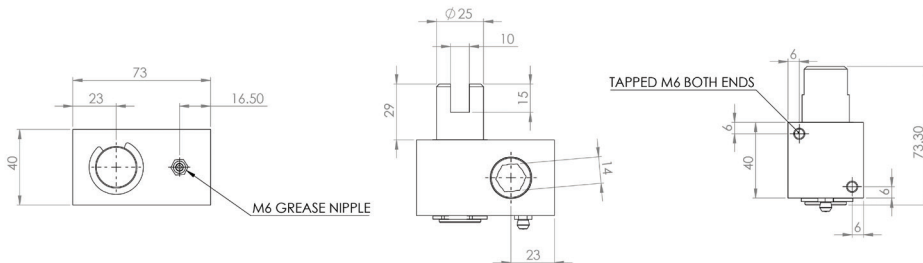
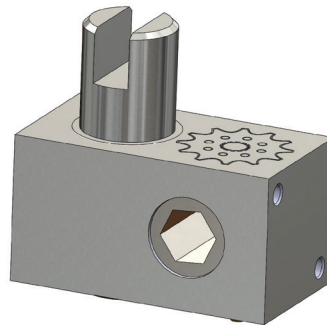
**Smallest European worm gear**  
**Alternative output spindles available**



# WG40

Popular European worm gear

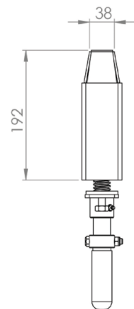
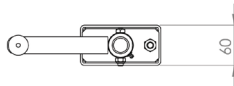
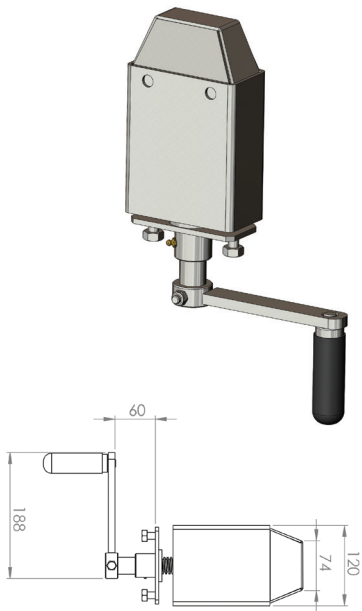
Alternative output spindles available



# ACCESSORIES

**JU10 Roof Jacking Unit**

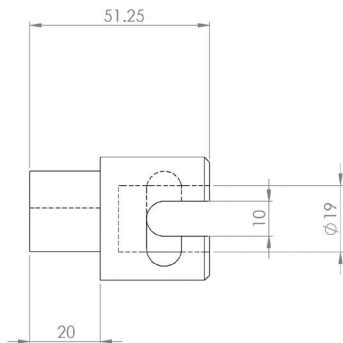
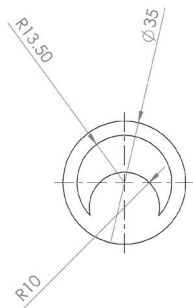
**Original designed for:  
Montracon**



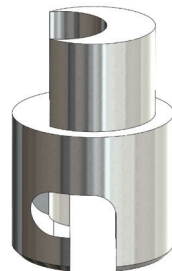
# ACCESSORIES

## Bottom Cam / Pole Coupler

Additional Part



Right Hand Front

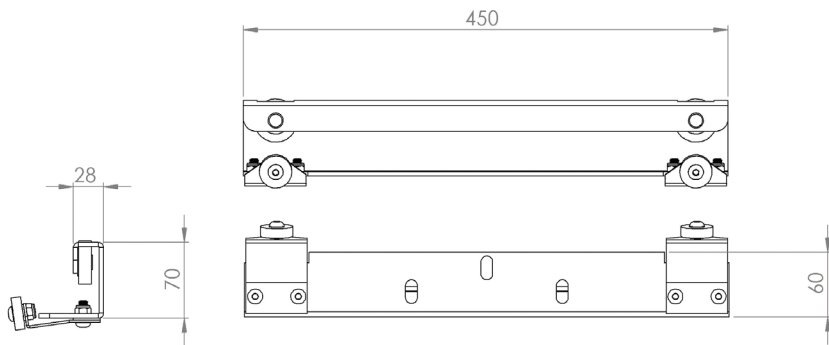
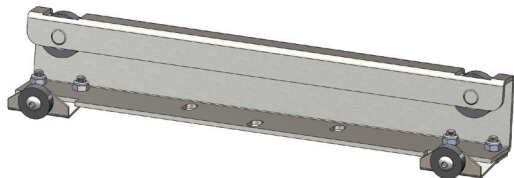


Left Hand Front

# ACCESSORIES

---

## Top Trolley Curtain Accessory





# LANGVER

Langver Engineering Ltd  
Thirsk Industrial Park, York Road, Thirsk, North Yorkshire, YO7 3AA, England

[info@langver.com](mailto:info@langver.com) | +44 (0) 1845 524938

[www.langver.com](http://www.langver.com)

